

POWER LINE

June 2024



Redwood Electric Cooperative

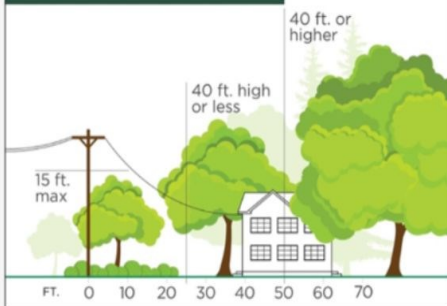
60 Pine Street • Clements, Minnesota 56224

3 WAYS TO HELP LIMIT TREE TRIMMING

Did you know electric utilities are required to trim trees and other types of vegetation that grow too close to overhead power lines? We work with our members to ensure the best trimming options for the cooperative and our members.

Here's how you can help:

PLANT TREES IN THE RIGHT PLACE.



KEEP TRANSFORMERS CLEAR FROM VEGETATION.



REPORT DANGEROUS TREES AND BRANCHES.



Trimming improves safety for all.

Let's work together to enjoy the beauty of trees and reliable electricity.



Our office will be closed on
July 4th!

Line crews will be available 24/7 for
outages.

Please call 888-251-5100 to report
any outages.

Beyond opening the box: Take steps to operate a generator safely

When the electricity goes out, your initial thought might be to run to the local hardware or big box store and buy a generator. However, using a generator should not be taken lightly, since it can be dangerous and even life-threatening if used incorrectly. There are several steps you should take before ever starting one up.

But first, homework

Before purchasing a generator, the first step is to research the best option for your home and budget. The second, and more important step, is to educate yourself on how to use one safely. Homeowners can choose from two types of generators: standby and portable. Standby generators are installed directly into the home's electrical system and are typically powered by natural gas or propane. These generators start automatically when the power goes out.

A portable generator is usually gas powered and is, well, portable. You can power appliances by plugging them into it. Your generator should have more output than the wattage of the electronics plugged into it. This way, the generator can create the extra electricity it takes for the initial power surge. Make sure there is nothing plugged into the generator when turning it on.

Safety tips

When you refuel a portable generator, make sure the engine is cool. Keep children and pets away from the generator, as it could burn them.

Generators pose electrical risks, especially when operated during inclement weather. Use a generator only when necessary, during wet conditions. Protect the generator by operating it under an open, canopy-like structure and on a dry surface where water cannot form puddles or drain under it.

Generators can be deadly

Carbon monoxide fumes emitted by the gasoline engine on the generator can be deadly. Always operate your portable generator outdoors at least 20 feet from your home.

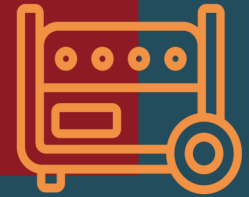
Misusing a portable generator or using a standby generator that is not installed correctly (and does not meet the electrical code) can cause backfeed, which puts others in danger. Backfeed happens when a generator feeds electricity back through a home's electrical system and meter into the power lines. To prevent this dangerous scenario, standby generators should have a transfer switch installed by a licensed professional. Do not plug a portable generator directly into a home outlet or electrical system. Instead, use a properly rated extension cord to plug appliances into an outlet on the generator for power.

When not in use

Operate your generator once a month for 10 minutes to ensure it is running properly. Keep your generator well maintained and follow all manufacturer's instructions. Have a standby generator installed in an easily accessible, weatherproof area.

For more electrical safety information, visit [SafeElectricity.org](https://www.SafeElectricity.org).

What to do before using a PORTABLE GENERATOR



Prepare

Install battery operated carbon monoxide (CO) alarms throughout your home; ensure they are working properly.

Position

Place a portable generator at least 20 feet from windows and doors; do not use one in a garage or carport.



Read

Carefully review and then follow all manufacturer's instructions.

Protect

If it is wet outside, keep it dry by placing it on a tarp. Position it under a portable canopy (not a carport).



Refuel Safely

Turn off your portable generator and let it cool down before refueling.

Inspect and Maintain

Inspect a portable generator before each use and make sure it is properly maintained.



Using a portable generator can be useful during an outage; however, use one correctly to prevent CO poisoning and to stay safe.

2024 REC Rebates



Residential Rebates

Dehumidifier: \$40 *bill credit*

Battery Powered Yard Tools:

Lawn Mower, Snow Blower-\$50 *bill credit*

Chainsaw, Leaf Blower, or Trimmer/Weed Whip- \$25 *bill credit*

Wi-Fi Smart Thermostat: \$25 *bill credit*

Air Source Heat Pump: \$600-\$1000 *check*

Ductless Mini Split: \$600 *check*

Ground Source Heat Pump: \$600/TON *check*



Commercial & Agriculture LED Lighting

LED Lighting rebates are based on kW reduction on retrofit projects only. \$50/kW reduction, rebate cannot exceed 25% of project cost and a minimum of 1 kW and a maximum of \$4,000.

Water Heater Programs

The program includes an 85-gallon or 105-gallon Marathon® water heater for \$700 (1/2 coop price)

Interruptible: Controlled Peak times only



888-251-5100

www.redwoodelectric.com



sgroebner@redwoodelectric.com



WHAT IS backfeed?

Avoid deadly backfeed and help keep lineworkers safe.

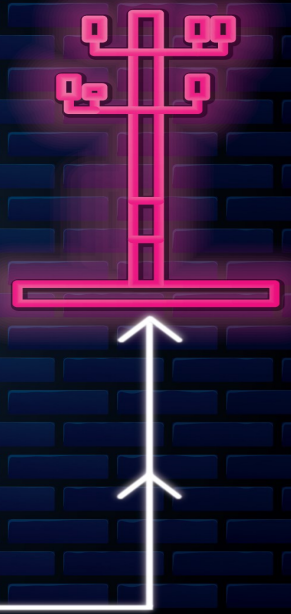
Backfeed happens when a person connects their portable generator to a wall outlet, which allows power to flow in reverse – that is, the alternate power source feeds energy back through their home's electrical system, their meter and back into the power lines.

Potentially deadly backfeed can also happen with permanently installed generators that are not used or installed correctly. They should be wired into your home by a qualified electrician, who will install either an automatic or manual transfer switch, depending on the generator. The job of this switch is to transfer a power source safely from its primary source to a backup source.

To keep utility crews safe, never plug a portable generator directly into a wall outlet or electrical system, and ensure transfer switches are professionally installed and working properly. Electric lineworkers thank you in advance.

Learn more at:

SafeElectricity.org



REC'S WATER HEATER PROGRAM



- 85-100 gallon Marathon water heater
 - Lifetime (residential) warranty on tank
- Discounted price (REC cost is between \$1,500-\$1,800)
 - Member pays: \$700 + costs incurred by a plumber
- Member is enrolled in one of REC's load management programs:
 - Peak Shave Interruptible: allows REC to temporarily interrupt electricity during peak usage times, usually on the hottest or coldest days of the month while still providing hot water for all your needs.
 - Storage: water heating system uses inexpensive off-peak electricity to "charge" a water heater with sufficient hot water to supply your needs while the electric supply is interrupted daily during on-peak hours the following day. Daily control is from 7:00 am-9:30 pm.
- Water heaters are available to members only

ATTENTION!

Redwood Electric Coop's
NEW Pay-by-Phone #
(844) 905-2209

Effective Immediately!



REC
Redwood Electric Cooperative

A Touchstone Energy® Cooperative

60 Pine St. Clements, MN 56224
(507) 692-2214
or
(888) 251-5100
(Toll free number & Outage number)

Pay-by-Phone #:
844-905-2209

Email address:
office@redwoodelectric.com

Web:
www.redwoodelectric.com

Office Hours:
7 a.m. to 3:30 p.m. Monday-Friday

Ron Horman, General Manager

Board of Directors

Daniel Tauer, President
Emily Evans, Vice President
Jill Weber VanDerWal, Secretary-Treasurer
Michael J, Baune, Director
Dean Fultz, Director
George Turbes, Director
Richard Nelson, Director

The Board meets the fourth Thursday of each month at
Redwood Electric Cooperative's building at
60 Pine St. Clements, MN 56224

STATEMENT OF NON-DISCRIMINATION

Redwood Electric Cooperative is an equal opportunity provider and employer. If you wish to file a Civil Rights program complaint of discrimination, complete the [USDA Program Discrimination Complaint Form](http://www.ascr.usda.gov/complaint_filing_cust.html) found online at http://www.ascr.usda.gov/complaint_filing_cust.html, or at any USDA office, or call (866) 632-9992 to request the form. You may also write a letter containing all of the information requested in the form. Send your completed complaint form or letter by mail to:

U.S. Department of Agriculture, Director, Office of Adjudication,
1400 Independence Avenue, S.W., Washington, D.C. 20250-9410, by
fax (202) 690-7442 or email at

program.intake@usda.gov.



Visit our website

