

# POWER LINE

September 2023



## Redwood Electric Cooperative

60 Pine Street • Clements, Minnesota 56224

# ENERGY ASSISTANCE

## Applications Available

MEMBERS MUST CONTACT OUR OFFICE TO MAKE ALL PAYMENT ARRANGEMENTS EITHER BY PHONE, EMAIL OR SMARTHUB!

These are the income guidelines for the FFY24 program year, which is October 1, 2023 through September 30, 2024.

Based on 50% of State Median Income (SMI) for household sizes 1-16 and on 110% of Federal Poverty Guidelines for household sizes 17-20.

Household Size	Annual Income	1 Month Max. Guidelines
1	\$32,667	\$2,722
2	\$42,719	\$3,559
3	\$52,770	\$4,397
4	\$62,822	\$5,235
5	\$72,874	\$6,072
6	\$82,925	\$6,910
7	\$84,810	\$7,067
8	\$86,695	\$7,224
9	\$88,579	\$7,381
10	\$90,464	\$7,538
11	\$92,349	\$7,695
12	\$94,233	\$7,852
13	\$96,118	\$8,009
14	\$98,003	\$8,166
15	\$99,887	\$8,323
16	\$101,772	\$8,481
17	\$106,503	\$8,875
18	\$112,157	\$9,346

## HOW DO I APPLY?

To get an application or if you need help filling it out, call:

Redwood Falls Office 507-637-2187

Marshall Office: 507-537-1416

Willmar Office: 320-235-0850

Applications can be found online at <https://www.unitedcapmn.org/programs/using/energy-assistance/>

Always contact our office if you receive a red disconnect notice on your bill (see example on page 3), or if you are unable to pay the balance before the due date.



2023

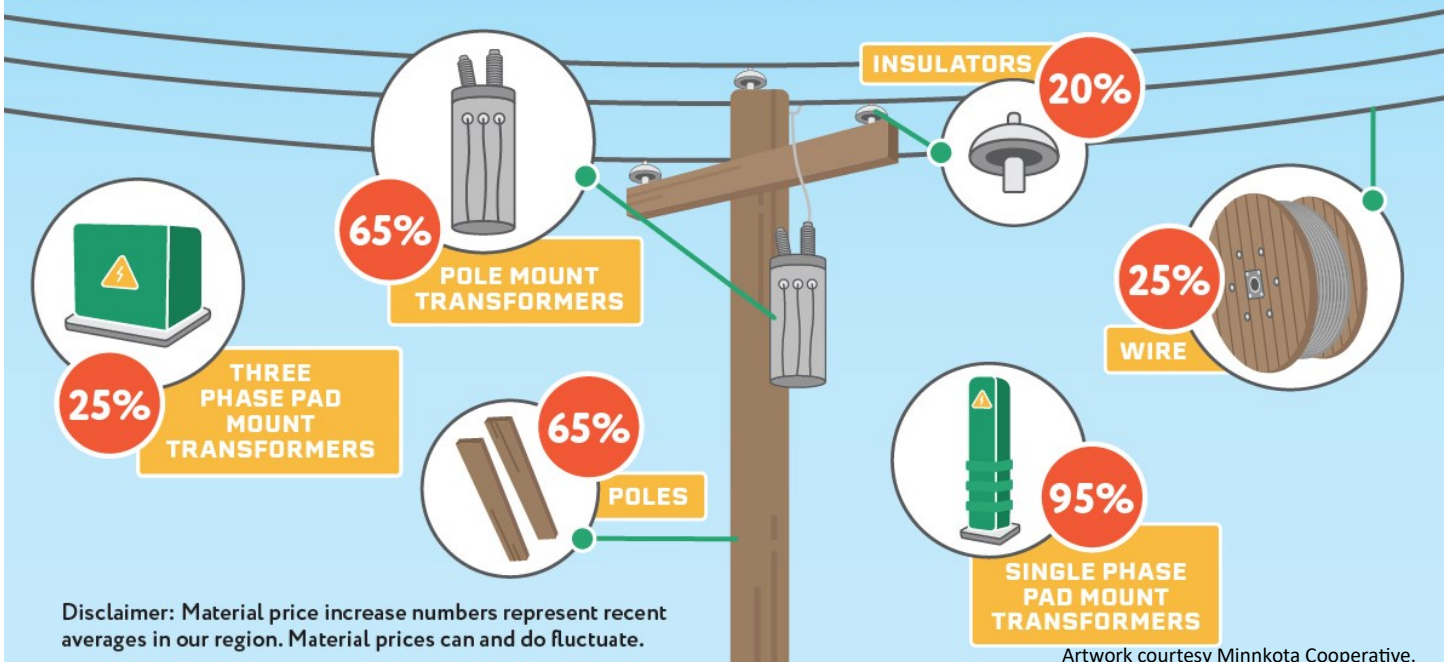
# FARM FEST

## CONGRATULATIONS TO OUR FARMFEST DRAWING WINNERS!

- CAROLYN H. WINNER-EGO POWER+ 15 INCH STRING TRIMMER
- GARY KRANZ WINNER-EGO POWER+ SELECT CUT 21 INCH SELF PROPELLED LAWN MOWER



## THE RISING COST OF ELECTRIC UTILITY MATERIALS



Its no secret inflation has significantly increased in many elements of our lives over the past few years. While Redwood Electric remains focused on keeping our rates low, we also have to face rising costs on electric utility materials. Costs that cannot easily be cut from our budget. The graph above shows the price increase percentage of basic electric components since 2020. Material prices and availability do fluctuate.

# SAMPLE BILL

This is a sample bill. This bill shows the disconnect notice on an account scheduled for automatic disconnection.

If your bill has red notices on it (as seen below), your location is scheduled for automatic disconnection. You must either pay the balance by the due date (*6th of every month*) or contact our office to make arrangements.

Phone: 507-692-2214 or 888-251-5100

Email: office@redwoodelectric.com

## Redwood Electric Cooperative

60 Pine Street

Clements, MN 56224-5000

Your Touchstone Energy® Cooperative



Office Hours: Monday-Friday 7:00 am - 3:30 pm

Phone: (507) 692-2214 or (888) 251-5100

Email: office@redwoodelectric.com

Outage Calls Taken 24 Hours a Day

Pay-By-Phone: 1-844-846-2696

John A. Dow  
P.O. Box 000  
LAMBERTON MN 56152

Account Number 1234567

Billing Period Aug. 2019 Due Date 10/06/2019

### Billing Summary

Previous Balance	282.50
Payments - 09/05/19	101.50 CR
Late Payment Fee	2.72
Balance Forward	183.72
Current Charges	155.00
<b>Total Due By 10/06/19</b>	<b>338.72</b>

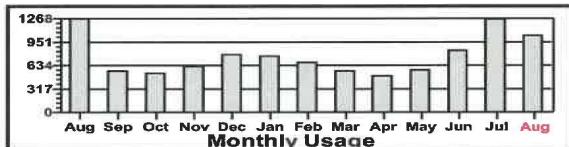
Page 1 of 1

**DISCONNECT NOTICE:** Your electrical services will be disconnected on 10/10/2019 AT 9:00 AM due to non-payment. To avoid a collection fee and disconnection of services the balance must be paid in full or you must contact our office to discuss payment options by 10/06/2019. If your location is disconnected for non-payment, the entire balance plus a disconnect/reconnect fee and security deposit must be paid prior to being reconnected.

### Messages

Please call our TOLL FREE number 1-888-251-5100 to contact our office and for POWER OUTAGES! Manage your account on Smart Hub at [www.redwoodelectric.com](http://www.redwoodelectric.com) or download the FREE app!

Location 56-D-AA	Svc Add. 1 Ash St.	Svc Desc.	Rate 160
<b>Meter Details</b>	<b>Meter 11111111</b>		
Current Reading:	Aug 31, 2019 Jul	8,634	
Previous Reading:	31, 2019	<u>7,601</u>	
Usage (Multiplier 1)		1,033	
<b>Detail of Charges</b>			
Cost of Providing Service			15.50
Redwood Delivery Charge		1,033 kWh @ 0.11322	116.96
Power Cost Adjustment		1,033 kWh @ 0.01224	12.64
Conservation Program		1,033 kWh @ -0.00079	-0.82
Sales Tax			9.92
County Tax			0.72
Round-Up			<u>0.08</u>
<b>Total Monthly Charge</b>			<b>155.00</b>



Please Return This Stub With Your Payment

John A. Dow  
P.O. Box 000  
Lamberton, MN 56152

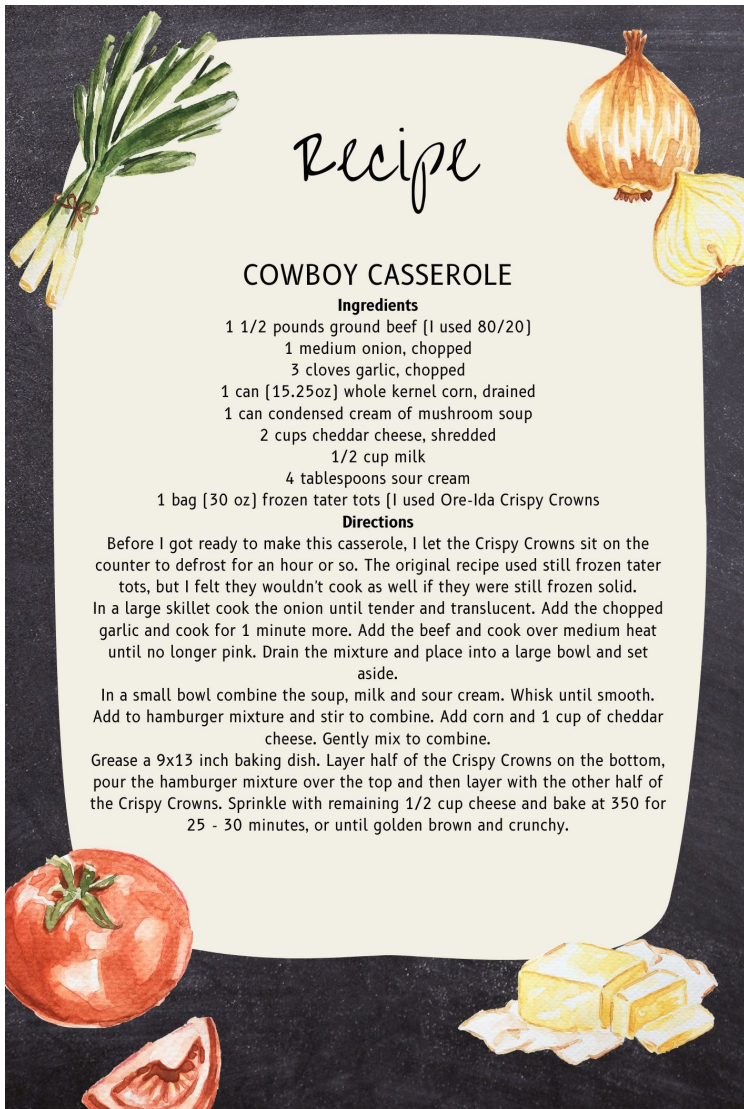
(507) 692-2214

**DISCONNECT NOTICE:** Your electrical services will be disconnected on 10/10/2019 AT 9:00 AM due to non-payment. To avoid a collection fee and disconnection of services the balance must be paid in full or you must contact our office to discuss payment options by 10/06/2019. If your location is disconnected for non-payment, the entire balance plus a disconnect/reconnect fee and security deposit must be paid prior to being reconnected.

Account Number:	1234567
Amount Due:	\$338.72
Due Date:	10/06/2019

Redwood Electric Cooperative  
60 Pine Street  
Clements MN 56224-5000





# Recipe

## COWBOY CASSEROLE

### Ingredients

- 1 1/2 pounds ground beef (I used 80/20)
- 1 medium onion, chopped
- 3 cloves garlic, chopped
- 1 can [15.25oz] whole kernel corn, drained
- 1 can condensed cream of mushroom soup
- 2 cups cheddar cheese, shredded
- 1/2 cup milk
- 4 tablespoons sour cream
- 1 bag [30 oz] frozen tater tots (I used Ore-Ida Crispy Crowns)

### Directions

Before I got ready to make this casserole, I let the Crispy Crowns sit on the counter to defrost for an hour or so. The original recipe used still frozen tater tots, but I felt they wouldn't cook as well if they were still frozen solid. In a large skillet cook the onion until tender and translucent. Add the chopped garlic and cook for 1 minute more. Add the beef and cook over medium heat until no longer pink. Drain the mixture and place into a large bowl and set aside.

In a small bowl combine the soup, milk and sour cream. Whisk until smooth. Add to hamburger mixture and stir to combine. Add corn and 1 cup of cheddar cheese. Gently mix to combine.

Grease a 9x13 inch baking dish. Layer half of the Crispy Crowns on the bottom, pour the hamburger mixture over the top and then layer with the other half of the Crispy Crowns. Sprinkle with remaining 1/2 cup cheese and bake at 350 for 25 - 30 minutes, or until golden brown and crunchy.

## Office Hours & Contact Information

Monday-Friday 7:00 AM-3:30 PM  
 Phone: 888-251-5100 or 507-692-2214  
 Email address: [office@redwoodelectric.com](mailto:office@redwoodelectric.com)  
 Web: [www.redwoodelectric.com](http://www.redwoodelectric.com)  
 SmartHub: [redwoodelectric.smarthub.coop](http://redwoodelectric.smarthub.coop)  
 Pay By Phone: 844-846-2696

## OUTAGES

(888) 251-5100  
 24 HOURS A DAY

## \*CALL BEFORE YOU DIG\*

Gopher State One  
 Call (800) 252-1166

## General Manager

Ronald Horman

## Board of Directors

Dick Nelson

Michael Baune

Dan Tauer

Dean Fultz

Jill Weber VanDerWal

Emily Evans

George W. Turbes

*Redwood Electric Cooperative is an equal opportunity provider and employer.*



## SMART PAYMENTS

SMART MANAGEMENT. SMART LIFE. SMARTHUB.

**Save time. Avoid service interruptions. Eliminate late fees.**

With SmartHub, you'll be notified when your bill is due and can pay securely online or in the app, anytime, anywhere.

Sign up for autopayments, set up your secure preferred payment method and let account management go into autopilot.

...All in the palm of your hand and online.

[www.smarthubapp.com](http://www.smarthubapp.com)

