

POWER LINE

February 2020



Redwood Electric Cooperative

60 Pine Street • Clements, Minnesota 56224

2020 Redwood Electric Rebate Programs

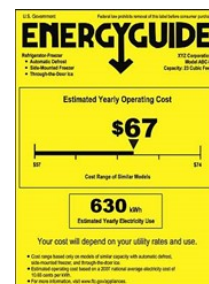
Rebate forms are available for download from www.redwoodelectric.com or in our office.

Members must submit a rebate application **within three months of purchase date** for Dehumidifier and Wi-Fi Smart Thermostats.

Members must submit a rebate application **within three months of install date** for ASHP's, Ductless Heat Pumps, GSHP's and all Commercial and individual Agriculture rebates.

Eligibility Criteria

- Must be a member of the cooperative.
- Equipment must be installed on premises that is served by Redwood Electric Cooperative.
- Member must submit
 - Proof of cost and date of purchase
 - Proof of ENERGY STAR® certified (Dehumidifier and Wi-Fi Smart Thermostat)
 - AHRI product rating sheet (ASHP)
 - Rebate Application form



Residential Rebates

Dehumidifier:	\$40.00 credit applied to energy bill
Wi-Fi Smart Thermostat	\$25.00 credit applied to energy bill
Air Source Heat Pump (CONTROLLED ON COOLING)	\$600.00
Air Source Heat Pump <i>HSPF 9.5 or greater</i> (CONTROLLED ON COOLING)	\$1000.00
Ductless Heat Pump	\$600.00
Ground Source Heat Pump (GSHP)	\$600/Ton (Max of 6 Ton)

Commercial/Ag Rebates & Other Programs

Please contact our electrician, Wayne, at 1-507-430-7143 if you have any questions

Managed Heat:

\$20/kw

Radio controlled, qualifies for discount of \$.033/kWh on system usage. Stored or dual fuel heat. Heat pumps are not eligible for this program. A check will be issued for the rebate amount. Call our office and ask for our electrician.

Commercial & Agriculture LED Retrofit: Rebates are available on a case-by-case basis. Rebates are based on kW reduction on retrofit projects only. \$50/KW saved, rebate cannot exceed 25% of project cost and a minimum of 1KW and maximum of \$4,000. A check will be issued for the rebate amount. Call our office and ask for our electrician or go to our website to get the rebate calculator to see if you qualify. We do not have rebate programs for new construction.

Water Heater Programs

Interruptible \$540.00
\$500 for the water heater and \$40 for the State inspection Fee.
*Controlled during Peak Times

Storage \$290.00
\$250 for the water heater and \$40 for the State Inspection Fee. This program will not work for every household.
*Controlled on Weekdays from 7am-1pm and 3-11pm/Weekends and Holidays controlled from 3pm-11pm.



Operation Round-Up Grants

Every fall our Trust board awards grants to several local non-profit organizations that serve our members and our local communities. Below are just a few grant recipients from 2020.

Thank you to our members for Rounding-Up your electric bill, every penny counts!



Left: Lamberton Ambulance received a grant for \$1,600.00. Pictured is Debbie Vollmer (Association President) and Allison Rue (Director)



Right: Tracy Area Medical Foundation received \$500 to help purchase medical equipment for Sanford Tracy Medical Center.



Left: Redwood County Warrior Fund was awarded \$500 to help provide funding to Veterans and their families in Redwood County. Pictured is Delbert Hertling



Right: Wabasso Public Library received a grant for \$1,000 to help pay for required software upgrades for the public computers. Pictured is the library Director, Scott Sobocinski



Operation Round-Up Scholarships

This scholarship is for students whose parents are members of REC, graduating from high school and plan to continue their education by attending college or trade school in the fall of 2020. Deadline to submit applications is Friday March 6th in our office by 3:30 pm.



DEADLINE MARCH 6, 2020

Youth Tour Applicants

Students win an all expense paid trip to Washington D.C. June 20-25, 2020

DEADLINE MARCH 6, 2020

Each year, rural electric cooperatives across the nation sponsor roughly 1,900 students on the Rural Electric Youth tour to Washington, D.C. Electric Cooperatives around the United States have brought almost 50,000 students to Washington D.C. for over 50 years. The Youth Tour program continues to foster the grassroots spirit of the rural electric cooperatives by demonstrating to high school juniors and seniors how our government works and how cooperatives work and what electric cooperatives are all about.

Students on the Electric Cooperative Youth Tour will participate in leadership training, engage in one-on-one conversations with elected officials, jumpstart their national peer network and tour Washington, D.C. They will tour the Monuments, Arlington Cemetery, Smithsonian's, Mount Vernon, National Museum of the Marine Corp, Holocaust Museum, Group picture in front of the White House, John F Kennedy Center of Performing Arts show and tour the U.S. Capital.



Interested juniors and seniors or students between the age of 16-18 whose parents are members of our cooperative must apply and are selected by the Youth Tour Director Committee. This trip is an all-expense paid trip including airfare, lodging, meals, transportation in D.C. and several prearranged tours.

Buffalo Chicken Dip

Ingredients

- 2 (10 ounce) cans chunk chicken, drained
- 2 (8 ounce) cream cheese, softened
- 3/4 cup buffalo sauce
- 1 cup ranch dressing
- 1.5 cups cheddar cheese shredded
- 1 bunch celery, cleaned and cut into 4 inch pieces
- 1 box chicken-flavored crackers

Directions

1. Heat chicken and hot sauce in a skillet over medium heat, until heated through. Stir in cream cheese and ranch dressing. Cook, stirring until well blended and warm. Mix in half of the shredded cheese, and transfer the mixture to a slow cooker. Sprinkle the remaining cheese over the top, cover, and cook on Low setting until hot and bubbly. Serve with celery and crackers.



The grid: A complex set of wires, devices and tech keeping your lights on

When you unplug your phone, you expect it to be fully charged. When you go to flip a switch, you expect the lights to turn on. And when you press the button on your coffee maker, you expect to smell the sweet aroma as the good stuff begins to pour. But how does it all work?

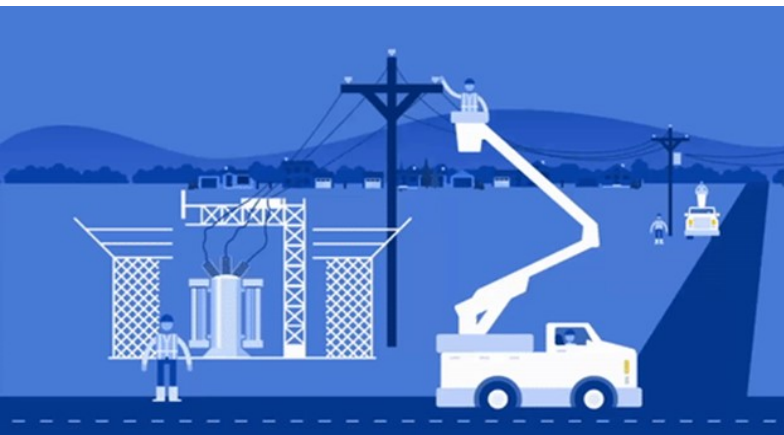
Your electric cooperative, Redwood Electric Cooperative, and its wholesale power provider, Great River Energy, work together to ensure your electric devices operate as intended each time you go to use them.

“Together, we keep the electrons flowing from power plants, wind and solar farms so that they reach you just as intended,” Sarah Groebner, Member Services said.

A complex set of wires, substations, transformers and switches are interconnected to ensure you have electricity when and where you need it. High-voltage power lines efficiently carry electrons at a larger and faster rate, so they can flow on distribution lines. Those electrons then “step down” to smaller voltages at substations eventually reaching your home, farm or business.

Great River Energy owns more than 4,500 miles of such high-voltage power lines and over 100 substations to provide resilient, reliable electric service.

When planning for new power lines or substations, Great River Energy engineers look for the most robust solution at the lowest possible cost. With new technologies maturing every day and lower pricing available, Great River Energy works with Redwood Electric Cooperative to ensure a resilient grid able to meet growing demand and address the complexities of integrating renewable resources.



Office Hours & Contact Information

Monday-Friday 7:00 AM-3:30 PM
Phone: 1-888-251-5100
Email address: office@redwoodelectric.com
Web: www.redwoodelectric.com
SmartHub: redwoodelectric.smarthub.coop
Pay By Phone: 844-846-2696

OUTAGES
(888) 251-5100
24 HOURS A DAY



• • • • •
CALL BEFORE YOU DIG

Gopher State One
Call (800) 252-1166

• • • • •
General Manager

Ronald Horman

Board of Directors

Werner Fischer

Dick Nelson

Michael Baune

Dan Tauer

Leo Mertens

Dean Fultz

Jill Weber VanDerWal

• • • • •
STATEMENT OF NON-DISCRIMINATION

Redwood Electric Cooperative is an equal opportunity provider and employer. If you wish to file a Civil Rights program complaint of discrimination, complete the [USDA Program Discrimination Complaint Form](http://www.ascr.usda.gov/complaint_filing_cust.html) found online at http://www.ascr.usda.gov/complaint_filing_cust.html, or at any USDA office, or call (866) 632-9992 to request the form. You may also write a letter containing all of the information requested in the form. Send your completed complaint form or letter by mail to:

U.S. Department of Agriculture, Director, Office of Adjudication,
1400 Independence Avenue, S.W., Washington, D.C. 20250-
9410, by fax (202) 690-7442 or email at program.intake@usda.gov.