

POWER LINE

April 2018



Redwood Electric Coopera-

National Lineman Appreciation Day

Every year, we take the time to thank our extraordinary linemen who dedicate their lives to keeping the lights on in our local communities. Eight linemen maintain over 1300 miles of line in Redwood Electric's service territory, and without them, our world would be dark.

We depend on our entire staff to keep Redwood Electric Cooperative running smoothly, but on April 9, 2018, we honor all linemen who often find themselves in dangerous and challenging situations, so our lives may be a little bit brighter and safer every day. These brave men repair damaged lines and maintain critical infrastructure for our communities. No matter the time--day or night, weekday or weekend--if the lights go out, so do they.

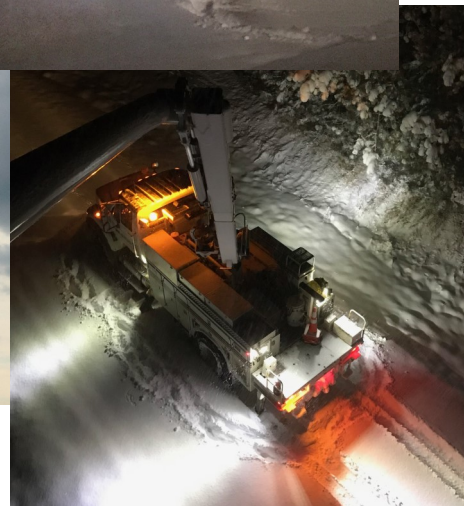
Perhaps you have seen them raising their bucket trucks in howling winds and torrential rains, or in freezing, icy conditions. They work around the clock near high-voltage power lines until electricity is restored to every member in our co-op community.

In addition to aiding members in our local service territory, linemen are always willing and eager to volunteer when a neighboring community, county or state is in need after a major outage occurs.

Our linemen are brave, committed and critical to our success. We hope you will join us in thanking the many linemen from our coop and the surrounding coops when you see them! Remember, your power works because they do!



REC Linemen: Front row left side: Dave, Clark, Don & Jeremy.
Back row left side: Steve, Michael, Matt & Marty.



FINANCIAL REPORT

Minnesota 60 Redwood

Balance Sheet - December 31, 2017 and 2016

ASSETS AND OTHER DEBITS

	2017	2016
ELECTRIC PLANT		
In Service	\$39,367,700	\$38,331,599
Under construction	759,626	305,337
Total electric plant	40,127,326	38,636,936
Less accumulated depreciation	13,667,888	12,829,099
Electric plant - net	26,459,438	25,807,837
OTHER PROPERTY AND INVESTMENTS		
Total other property and investments	4,361,381	3,990,475
CURRENT ASSETS		
Cash and cash equivalents	761,682	254,165
Accounts receivable, net of allowance for uncollectibles	2,860,979	2,661,352
Material and supplies	634,558	472,243
Prepayments	8,773	7,433
Interest receivable	3,982	4,966
Total current assets	4,269,974	3,400,159
DEFERRED CHARGES	324,095	377,730
TOTAL ASSETS & OTHER DEBITS	\$35,414,888	\$33,576,201

LIABILITIES AND OTHER CREDITS

EQUITIES		
Patronage capital	\$13,156,702	\$12,550,437
Other Equities	233,240	217,232
Total equities	13,389,942	12,767,669
LONG-TERM DEBT	16,825,556	17,641,569
CURRENT LIABILITIES		
Accounts payable	3,960,258	2,298,156
Customer deposits	49,167	53,417
Other current liabilities	636,912	759,678
Total current liabilities	4,646,337	3,111,251
DEFERRED CREDITS	553,053	55,712
TOTAL LIABILITIES & OTHER CREDITS	\$35,414,888	\$33,576,201

STATEMENT OF OPERATIONS - DECEMBER 31, 2017 AND 2016

	2017	2016
OPERATING REVENUES		
Electric	\$14,290,966	\$13,884,281
Other	115,387	28,859
Total operating revenue	14,406,353	13,913,140
OPERATING EXPENSES		
Cost of power	9,135,112	8,790,522
Distribution - operation	1,019,040	980,519
Distribution - maintenance	631,193	661,842
Customer accounts	337,520	384,122
Customer service and information	166,458	181,595
Administrative and general	841,015	821,693
Depreciation	1,190,371	1,130,893
Interest on long-term debt	572,165	620,944
Interest - other	15,266	8,395
Total operating expenses	13,908,140	13,580,525
OPERATING MARGIN BEFORE CAPITAL CREDITS	498,213	332,615
GENERATION AND TRANSMISSION AND OTHER		
COOPERATIVE CAPITAL CREDITS	397,922	450,226
NET OPERATING MARGIN	896,135	782,841
NONOPERATING MARGIN	16,306	28,990
NET MARGIN	912,441	811,831
PATRONAGE CAPITAL - BEGINNING OF YEAR	12,550,437	12,080,262
RETIREMENT OF CAPITAL CREDITS	(306,176)	(341,656)
PATRONAGE CAPITAL - END OF YEAR	\$13,156,702	\$12,550,437

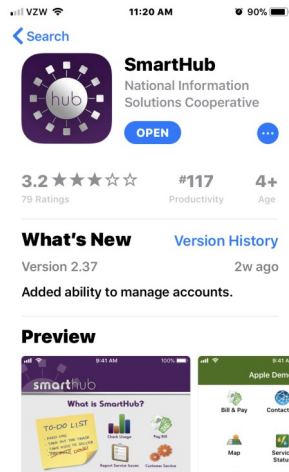
SmartHub

THE NEW & EASY WAY TO MANAGE YOUR ACCOUNT ONLINE OR WITH THE APP

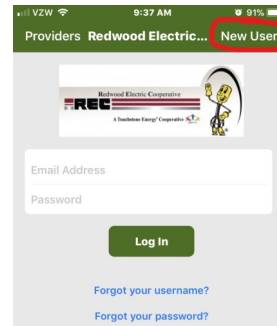


Is Free & Easy!!

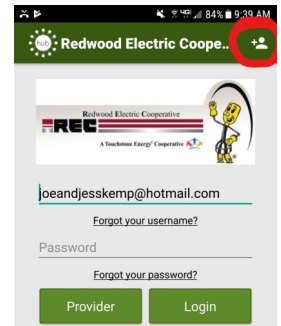
1. Install the SmartHub App from the App store on your smart phone or device.



2. Click on New User option on upper right side of screen. **Please note that your screen will look different depending on if you are using an apple device or droid. See examples circled in RED below.*

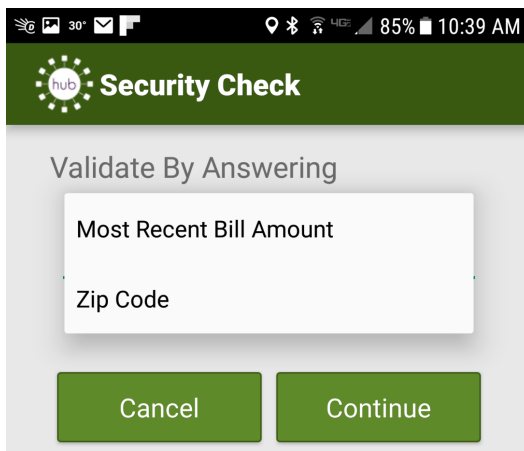


Apple Device

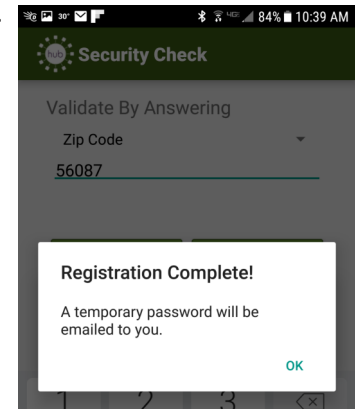


Droid Device

3. Choose Redwood Electric by name or location. Then Enter your most recent bill amount or your billing zip code and continue.



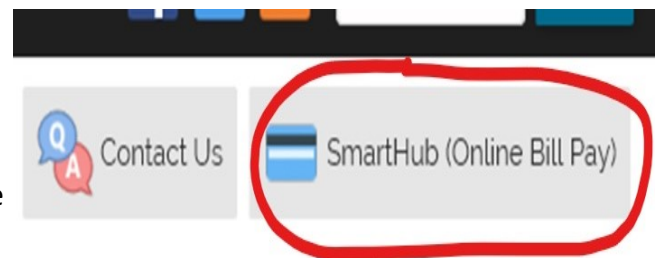
4. Continue registering your SmartHub account settings as you prefer. Once your registration is complete you will be emailed a temporary password. You will need to enter your temporary password into SmartHub and set up a new password.



Don't have a Smart Phone or Device?

Don't worry!!

You can still use our SmartHub site by logging into our website at www.redwoodelectric.com and clicking on the SmartHub (Online Bill Pay) icon on the upper right side of the screen. Or you can go directly to the SmartHub site at <https://redwoodelectric.smarthub.coop> and login as a new user to get started!



Jalapeno Popper Wonton Cups

Ingredients:

12 wonton wrappers (I found them in the produce section of my local grocery store)

4 oz. cream cheese softened

1/2 c. sour cream

12 oz. bacon cooked & crumbled (reserve 2 Tbsp.)

1 c. shredded cheddar cheese (reserve 2 Tbsp)

3-4 jalapenos seeded and chopped (for more spice, do not remove all the seeds)



Directions:

Preheat oven to 350 degrees.

Spray muffin pan with cooking spray.

Place one wonton wrapper in each muffin cup; bake 8 minutes or until lightly brown.

Remove from oven and cool slightly.

In a medium-sized mixing bowl, stir together cream cheese, sour cream, bacon, cheddar cheese, chopped jalapenos.

Spoon filling into wonton cups, then sprinkle with reserve bacon and cheese.

Return to oven and bake for an additional 8-10 minutes until wontons are golden brown and cheese is melted.

Office Hours & Contact Information

Monday-Friday 7:00 AM-3:30 PM

Phone: (888) 251-5100

Email address: office@redwoodelectric.com

Web: www.redwoodelectric.com

Pay By Phone: 844-846-2696

SmartHub Link: <https://redwoodelectric.smarthub.coop>

OUTAGES

1 (888) 251-5100

24 HOURS A DAY

CALL BEFORE YOU DIG

Gopher State One

Call (800) 252-1166

General Manager

Ronald Horman

Board of Directors

Werner Fischer

Dick Nelson

Michael Baune

Dan Tauer

Leo Mertens

Dean Fultz

Jill Weber VanDerWal

Our office will be closed on May 28th



STATEMENT OF NON-DISCRIMINATION

Redwood Electric Cooperative is an equal opportunity provider and employer. If you wish to file a Civil Rights program complaint of discrimination, complete the USDA Program Discrimination Complaint Form

found online at http://www.ascr.usda.gov/complaint_filing_cust.html, or at any USDA office, or call (866) 632-9992 to request the form. You may also write a letter containing all of the information requested in the form. Send your completed complaint form or letter by mail to:

U.S. Department of Agriculture, Director, Office of Adjudication, 1400 Independence Avenue, S.W., Washington, D.C. 20250-9410, by fax (202) 690-7442 or email at program.intake@usda.gov.